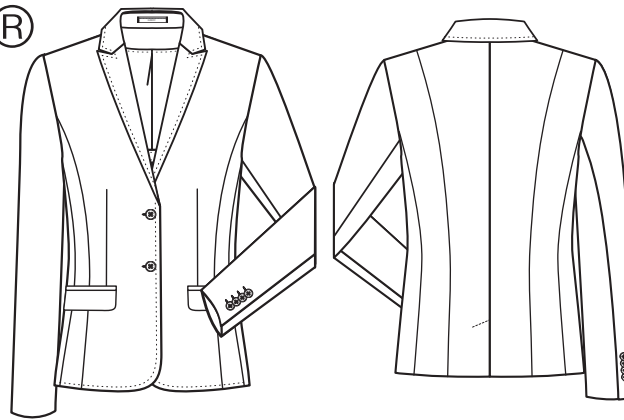


MODERN WITH 37.5[®] Regular Fit



STYLE 1424



GERMAN

DAMEN-BLAZER

- Regular Fit
- 2-Knopf
- Spitzfacon
- 2 Pattentaschen
- 1 Reißverschluss-Innentasche
- AMF-Handstich
- Rückenschlitz
- Halbgefüttert
- Rückenlänge 60 cm | Gr. 38
- **GRÖSSEN:** 32-52, 72-88

NR: 1424.2810.010 PINPOINT SCHWARZ
NR: 1424.2810.020 PINPOINT MARINE
NR: 1424.2820.010 SCHWARZ
NR: 1424.2820.014 HELLGRAU
NR: 1424.2820.021 DUNKELBLAU

ENGLISH

LADIES BLAZER

- regular fit
- 2-button
- peaked lapel
- 2 flap pockets
- 1 zip-pocket inside
- AMF hand stitch
- back vent
- half lined
- back length 60 cm | size 38
- **SIZES:** 32-52, 72-88

NO: 1424.2810.010 PINPOINT BLACK
NO: 1424.2810.020 PINPOINT NAVY BLUE
NO: 1424.2820.010 BLACK
NO: 1424.2820.014 LIGHT GREY
NO: 1424.2820.021 DARK BLUE

FRENCH

BLAZER FEMME

- Regular fit
- 2 boutons
- Revers à pointe
- 2 poches à rabat
- 1 poche intérieure zippée
- Point à la main AMF
- Fente de dos
- Semi-doublure
- Longueur dos 60 cm | taille 38
- **TAILLES :** 32-52, 72-88

RÉF : 1424.2810.010 PINPOINT NOIR
RÉF : 1424.2810.020 PINPOINT BLEU MARINE
RÉF : 1424.2820.010 NOIR
RÉF : 1424.2820.014 GRIS CLAIR
RÉF : 1424.2820.021 BLEU FONCÉ

DUTCH

DAMES BLAZER

- regular fit
- 2 knoops
- puntig revers
- 2 klepzakken
- 1 binnenzak met ritssluiting
- AMF-stitching
- split achterzijde
- half gevoerd
- ruglengte 60 cm | maat 38
- **MAAT:** 32-52, 72-88

NR: 1424.2810.010 PINPOINT ZWART
NR: 1424.2810.020 PINPOINT MARINE
NR: 1424.2820.010 ZWART
NR: 1424.2820.014 LICHTGRIJS
NR: 1424.2820.021 DONKERBLAUW

GEWEBE: 52% Polyester, 46% Schurwolle, 2% Elasthan, 190 g/m²
FUTTER: 100% Polyester

PFLERGE:



FABRIC: 52% polyester, 46% virgin wool, 2% elastane, 190 g/m²
LINING: 100% polyester

CARE:



TEXTILE : 52 % polyester, 46 % laine vierge, 2 % élasthanne, 190 g/m²
DOUBLURE : 100 % polyester

ENTRETIEN :



DOEK: 52% polyester, 46% scheerwol, 2% elastaan, 190 g/m²
BINNENVOERING: 100% polyester

ONDERHOUD:

